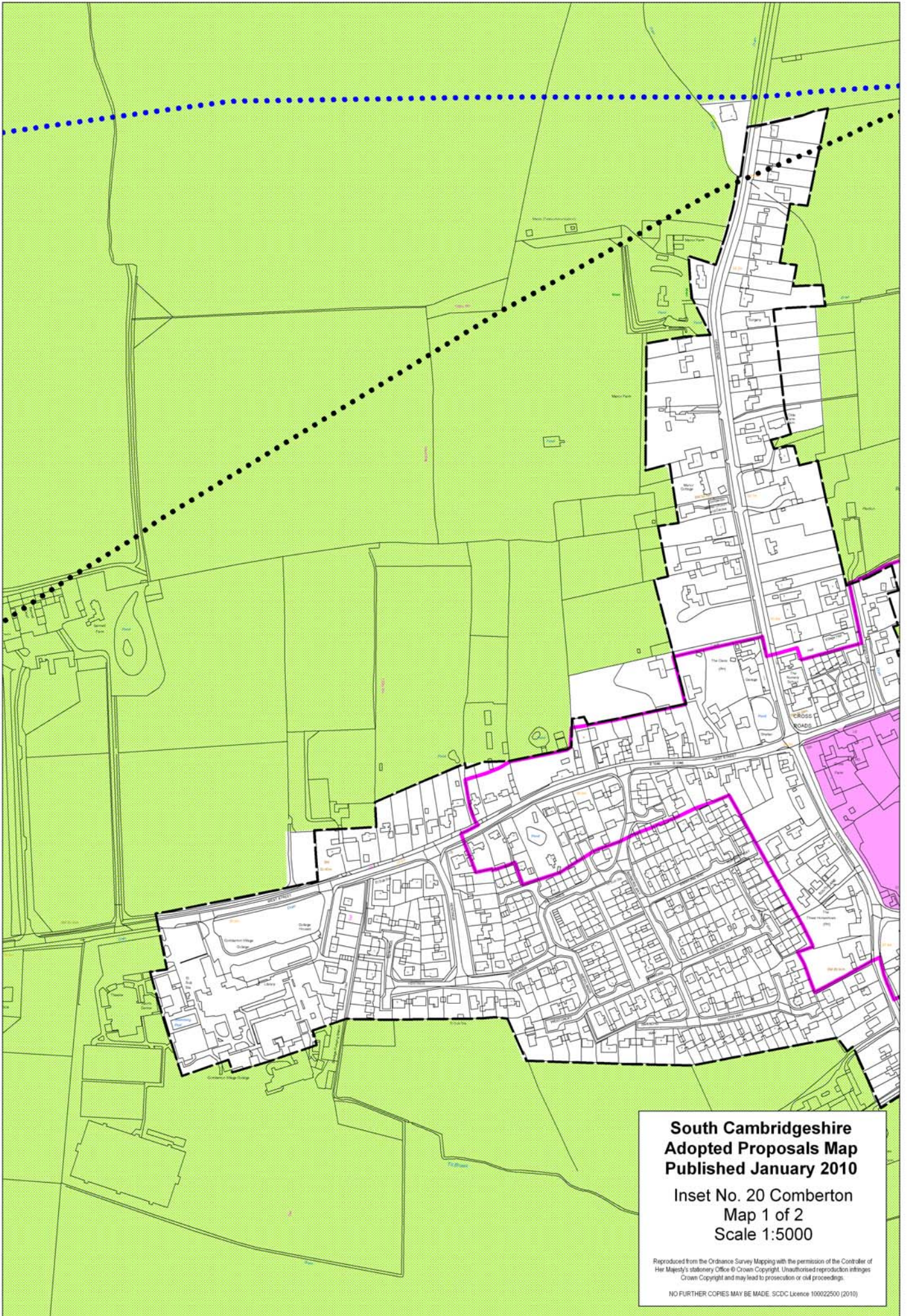


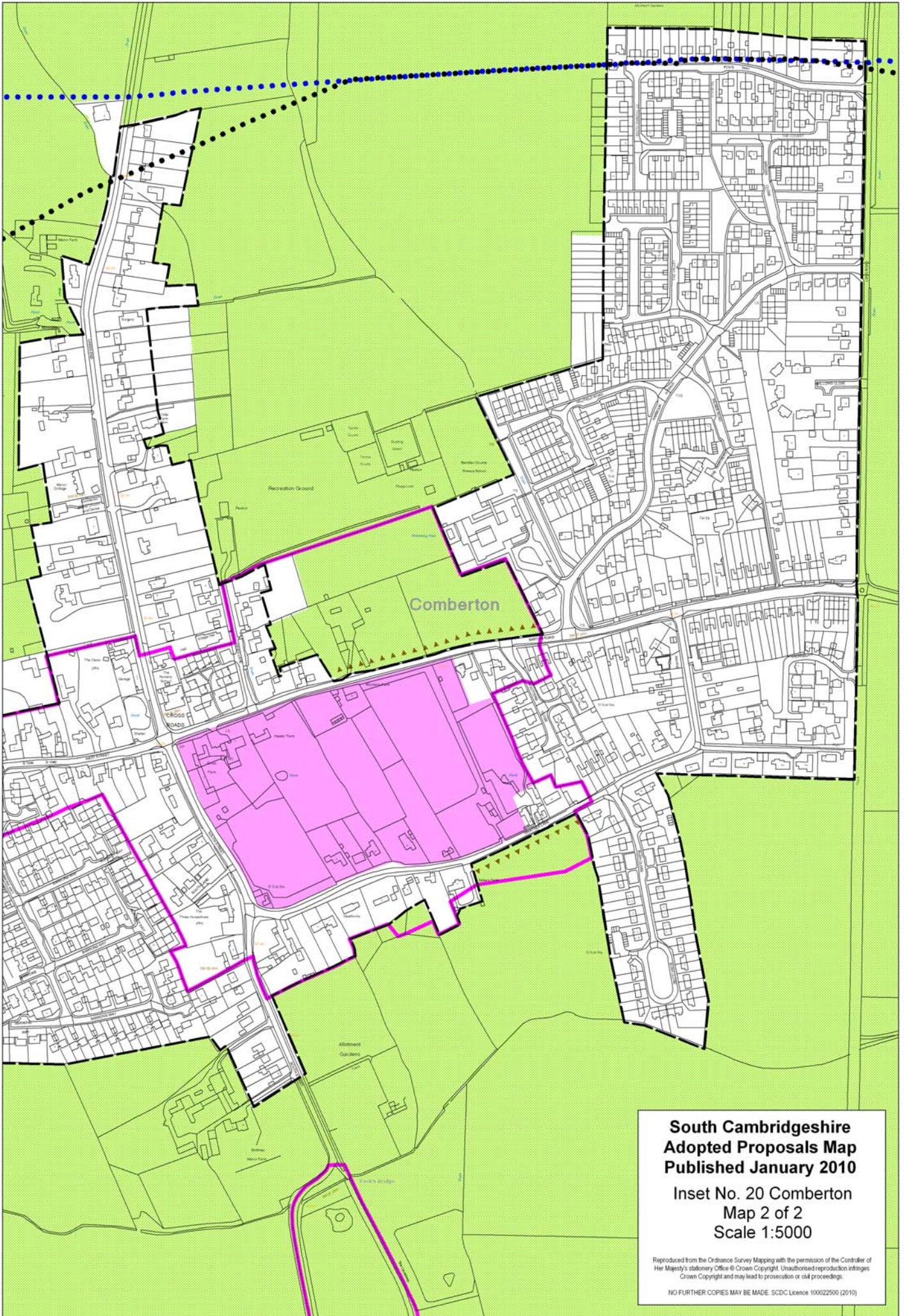
**South Cambridgeshire
Adopted Proposals Map
Published January 2010**

**Inset No. 19 Cherry Hinton
Map 1 of 1
Scale 1:6000**

Reproduced from the Ordnance Survey Mapping with the permission of the Controller of Her Majesty's Stationery Office © Crown Copyright. Unauthorised reproduction infringes Crown Copyright and may lead to prosecution or civil proceedings.

NO FURTHER COPIES MAY BE MADE. SCDL Licence 100022500 (2010)





**South Cambridgeshire
Adopted Proposals Map
Published January 2010**

**Inset No. 20 Comberton
Map 2 of 2
Scale 1:5000**

Reproduced from the Ordnance Survey Mapping with the permission of the Controller of Her Majesty's Stationery Office © Crown Copyright. Unauthorised reproduction infringes Crown Copyright and may lead to prosecution or civil proceedings.

NO FURTHER COPIES MAY BE MADE. SDC Licence 100022500 (2010)

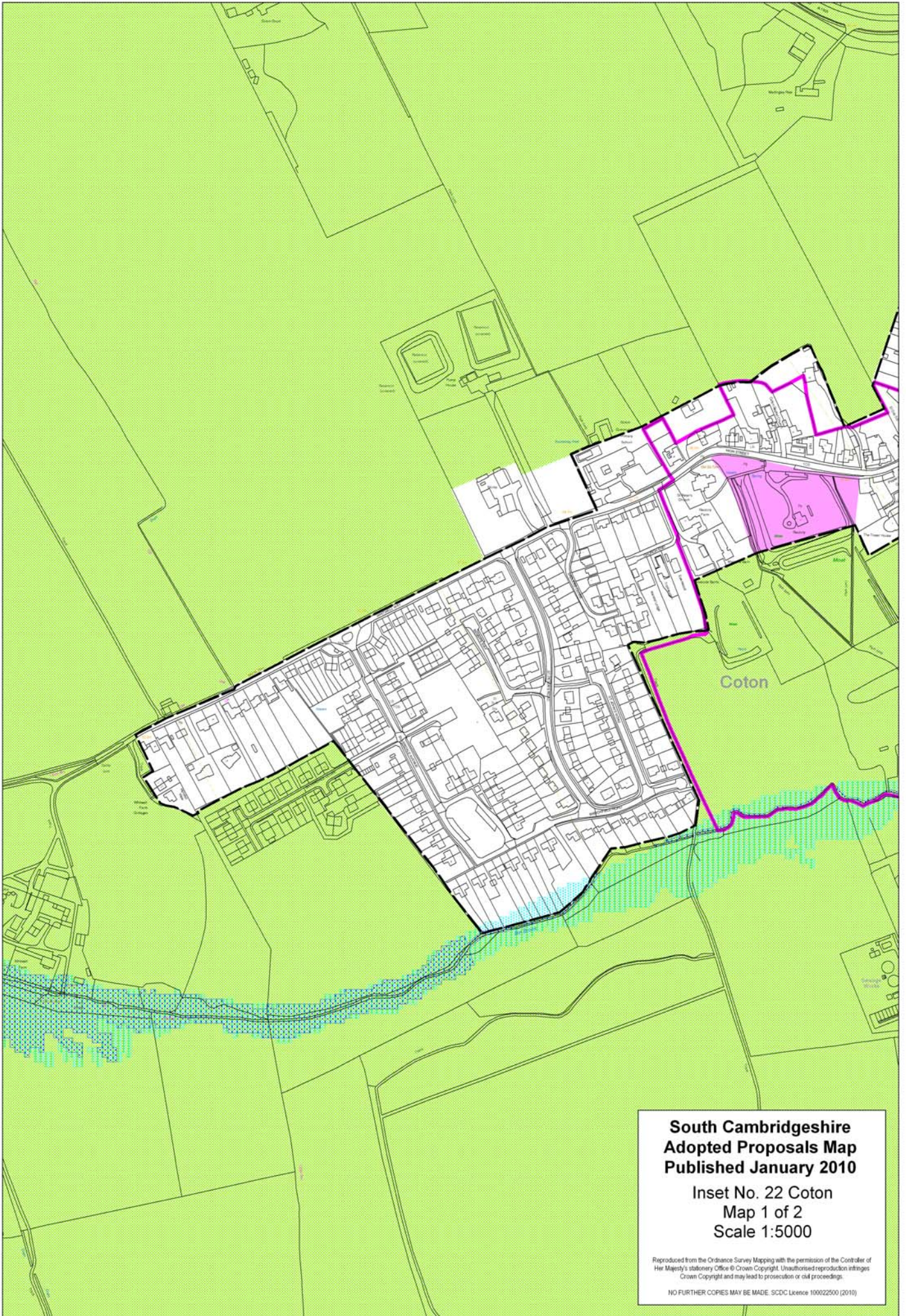


**South Cambridgeshire
Adopted Proposals Map
Published January 2010**

**Inset No. 21 Conington
Map 1 of 1
Scale 1:5000**

Reproduced from the Ordnance Survey Mapping with the permission of the Controller of Her Majesty's Stationery Office © Crown Copyright. Unauthorised reproduction infringes Crown Copyright and may lead to prosecution or civil proceedings.

NO FURTHER COPIES MAY BE MADE. SDC Licence 100022500 (2010)

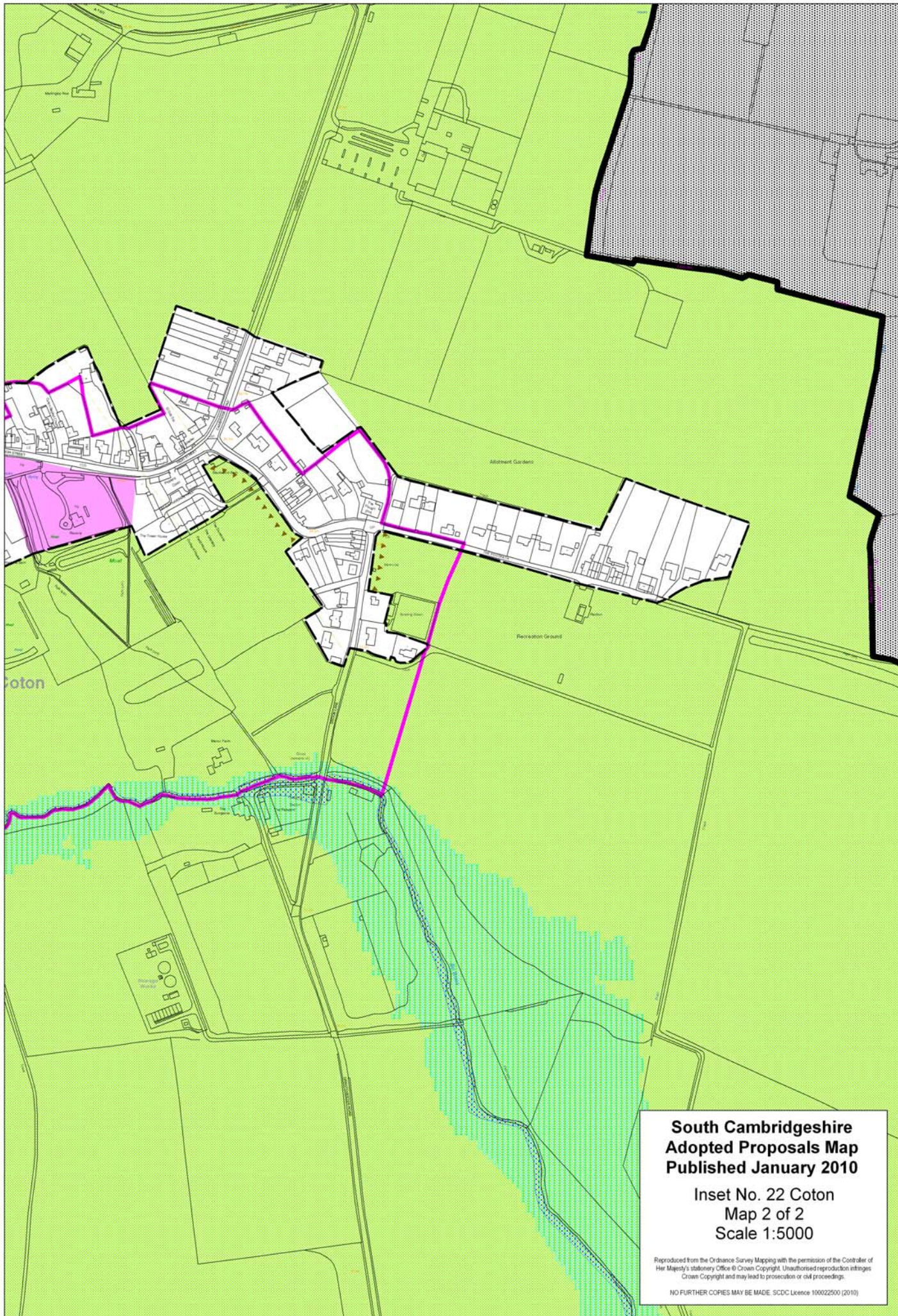


**South Cambridgeshire
Adopted Proposals Map
Published January 2010**

**Inset No. 22 Coton
Map 1 of 2
Scale 1:5000**

Reproduced from the Ordnance Survey Mapping with the permission of the Controller of Her Majesty's Stationery Office © Crown Copyright. Unauthorised reproduction infringes Crown Copyright and may lead to prosecution or civil proceedings.

NO FURTHER COPIES MAY BE MADE. SDC Licence 100022500 (2010)

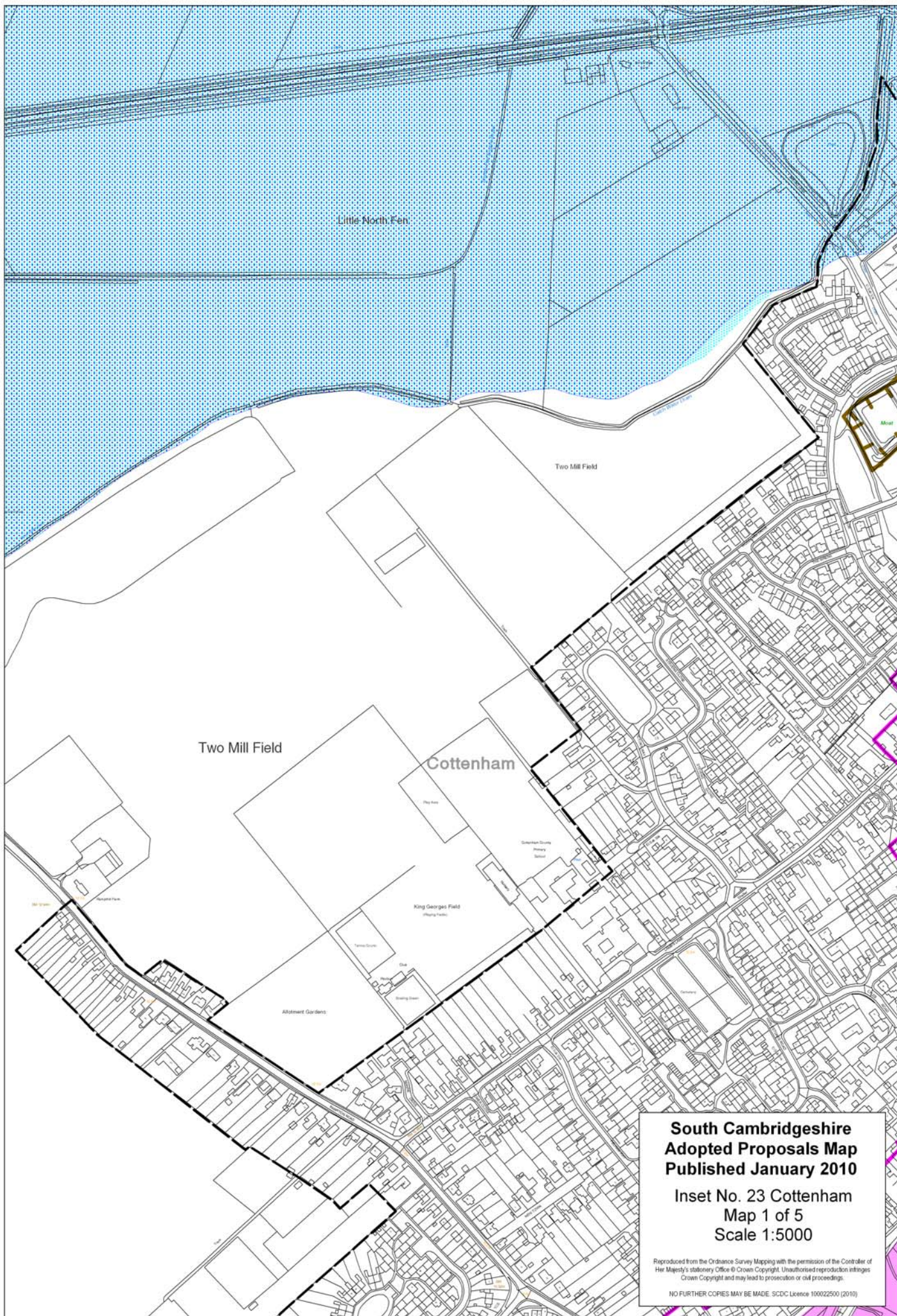


**South Cambridgeshire
Adopted Proposals Map
Published January 2010**

**Inset No. 22 Coton
Map 2 of 2
Scale 1:5000**

Reproduced from the Ordnance Survey Mapping with the permission of the Controller of Her Majesty's Stationery Office © Crown Copyright. Unauthorised reproduction infringes Crown Copyright and may lead to prosecution or civil proceedings.

NO FURTHER COPIES MAY BE MADE. SDCS Licence 100022500 (2010)

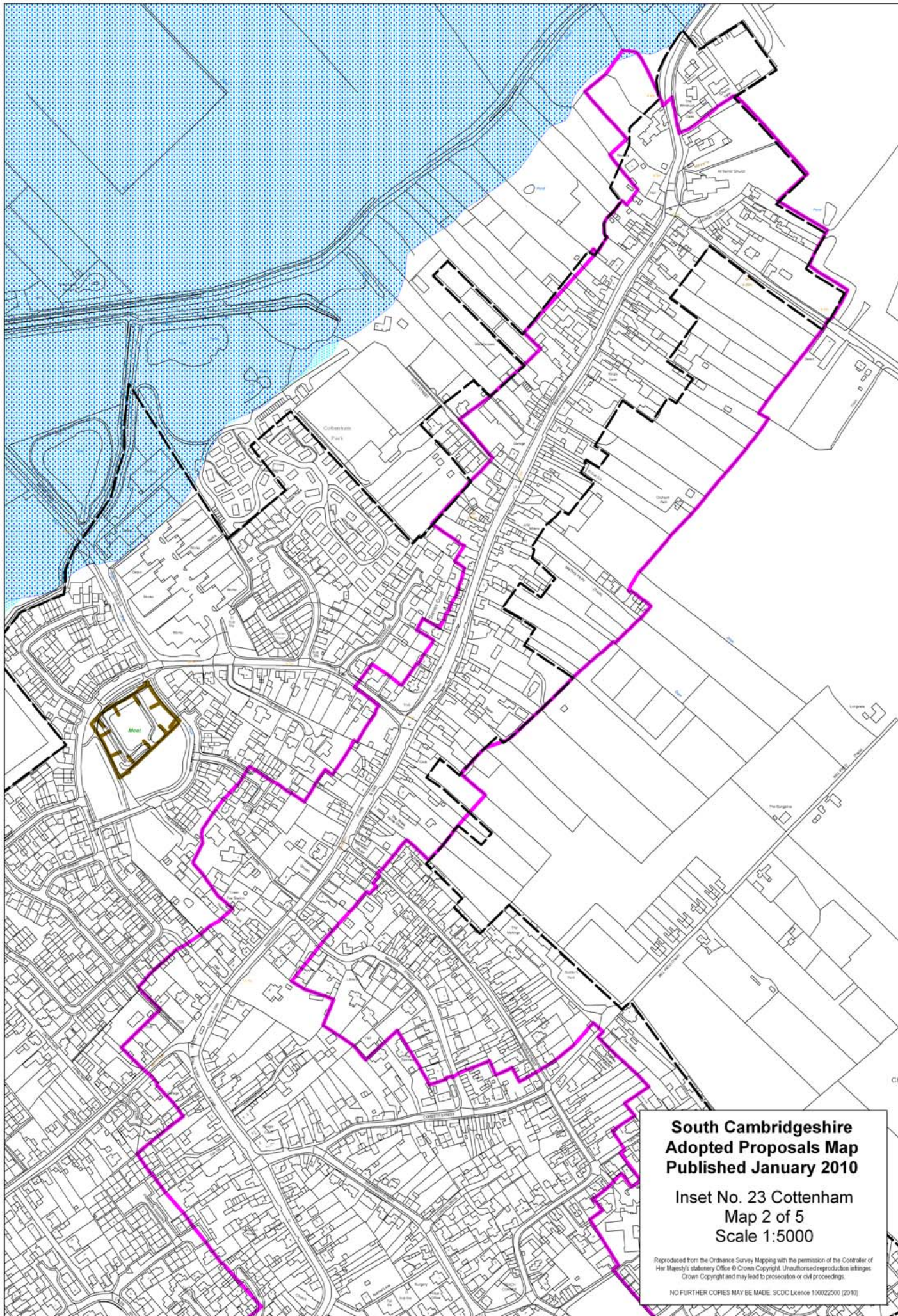


**South Cambridgeshire
Adopted Proposals Map
Published January 2010**

**Inset No. 23 Cottenham
Map 1 of 5
Scale 1:5000**

Reproduced from the Ordnance Survey Mapping with the permission of the Controller of Her Majesty's Stationery Office © Crown Copyright. Unauthorised reproduction infringes Crown Copyright and may lead to prosecution or civil proceedings.

NO FURTHER COPIES MAY BE MADE. SCDL Licence 100022500 (2010)

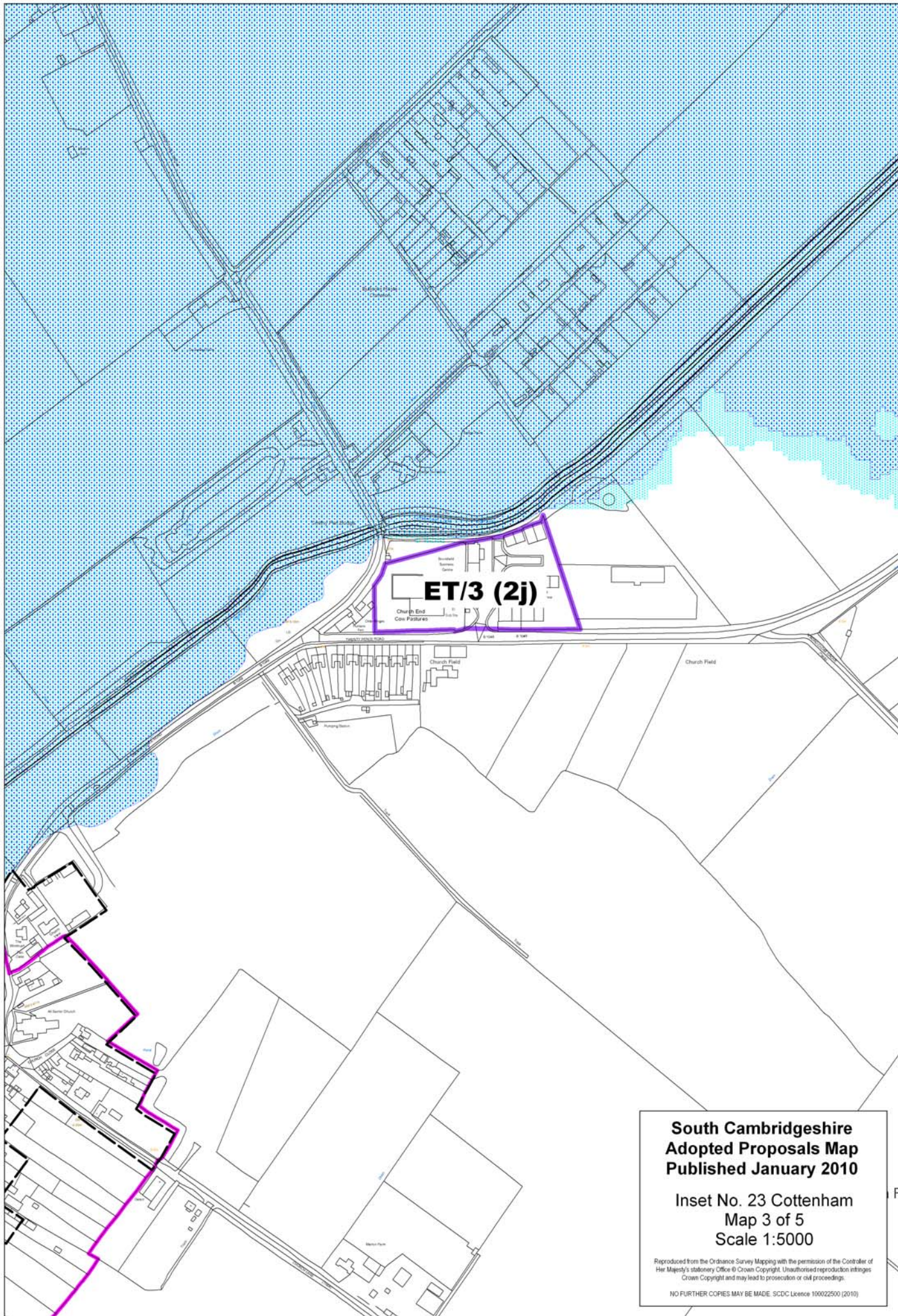


**South Cambridgeshire
Adopted Proposals Map
Published January 2010**

**Inset No. 23 Cottenham
Map 2 of 5
Scale 1:5000**

Reproduced from the Ordnance Survey Mapping with the permission of the Controller of Her Majesty's Stationery Office © Crown Copyright. Unauthorised reproduction infringes Crown Copyright and may lead to prosecution or civil proceedings.

NO FURTHER COPIES MAY BE MADE. SDCS Licence 100022500 (2010)



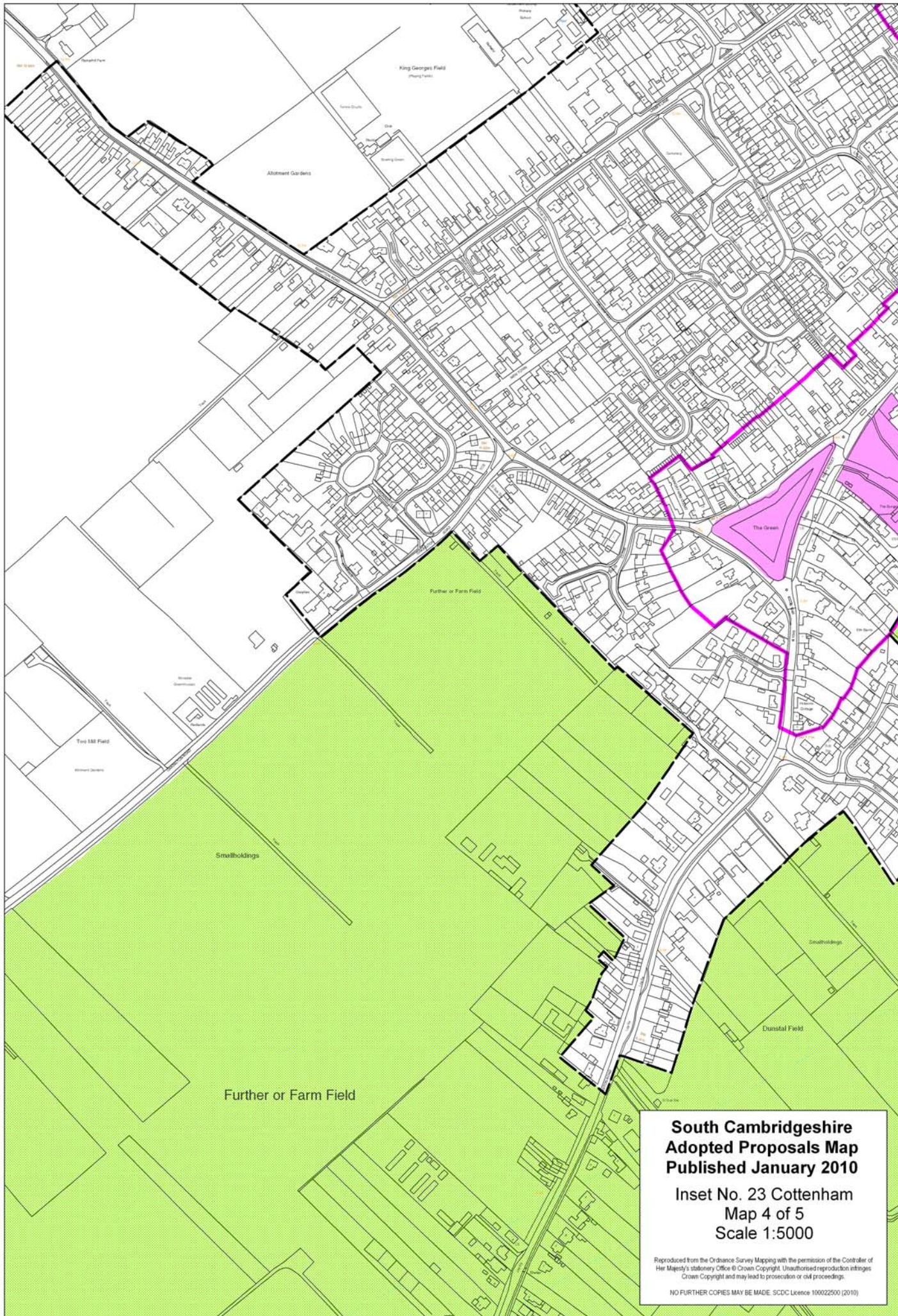
ET/3 (2j)

Church End
Cove Pastures

**South Cambridgeshire
Adopted Proposals Map
Published January 2010**

**Inset No. 23 Cottenham
Map 3 of 5
Scale 1:5000**

Reproduced from the Ordnance Survey Mapping with the permission of the Controller of Her Majesty's Stationery Office © Crown Copyright. Unauthorised reproduction infringes Crown Copyright and may lead to prosecution or civil proceedings.
NO FURTHER COPIES MAY BE MADE. SDC Licence 100022500 (2010)

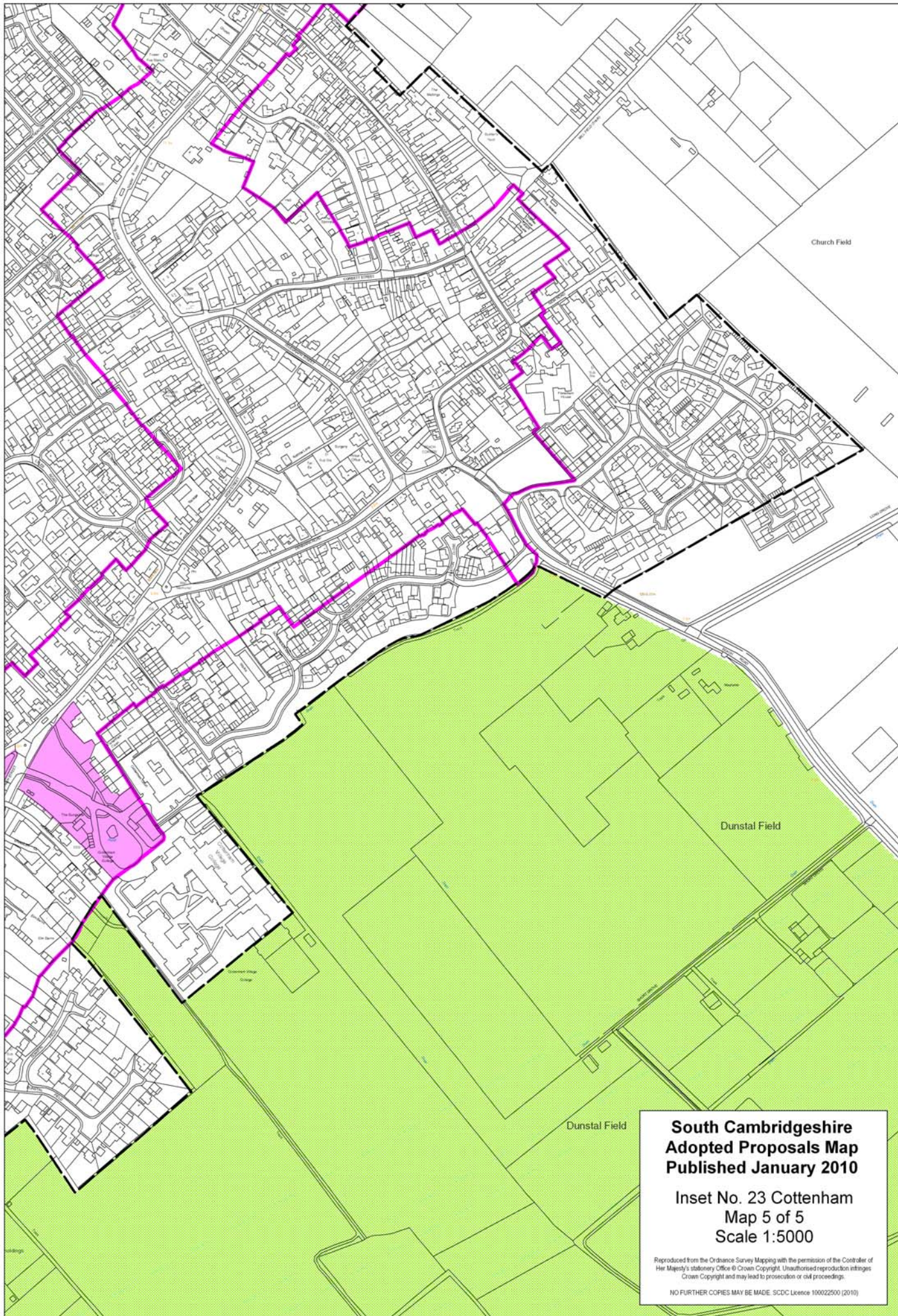


**South Cambridgeshire
Adopted Proposals Map
Published January 2010**

**Inset No. 23 Cottenham
Map 4 of 5
Scale 1:5000**

Reproduced from the Ordnance Survey Mapping with the permission of the Controller of Her Majesty's Stationery Office © Crown Copyright. Unauthorised reproduction infringes Crown Copyright and may lead to prosecution or civil proceedings.

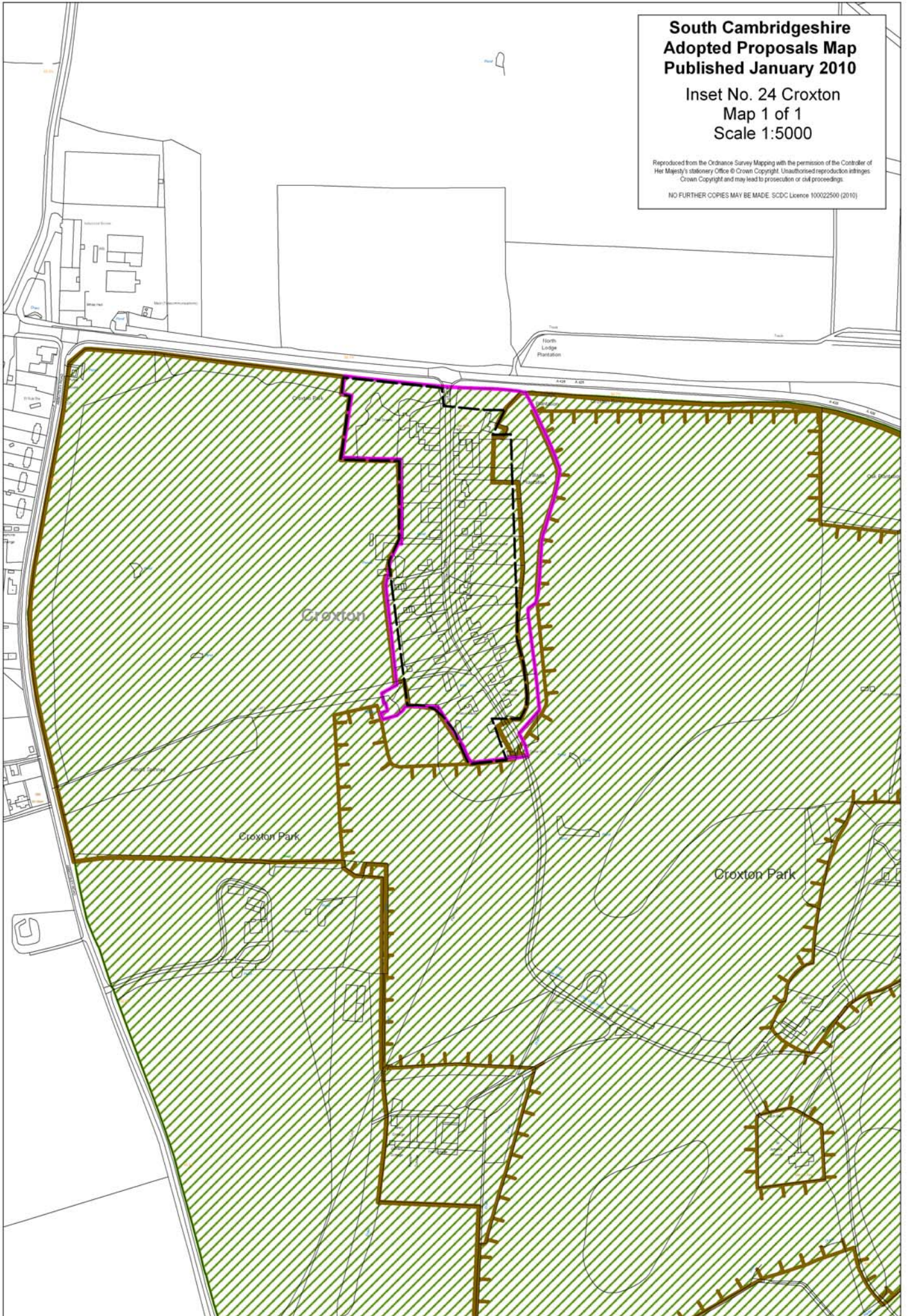
NO FURTHER COPIES MAY BE MADE. SDC Licence 100022500 (2010)



**South Cambridgeshire
Adopted Proposals Map
Published January 2010**

**Inset No. 24 Croxton
Map 1 of 1
Scale 1:5000**

Reproduced from the Ordnance Survey Mapping with the permission of the Controller of Her Majesty's Stationery Office © Crown Copyright. Unauthorised reproduction infringes Crown Copyright and may lead to prosecution or civil proceedings.
NO FURTHER COPIES MAY BE MADE. SCDC Licence 100022500 (2010)



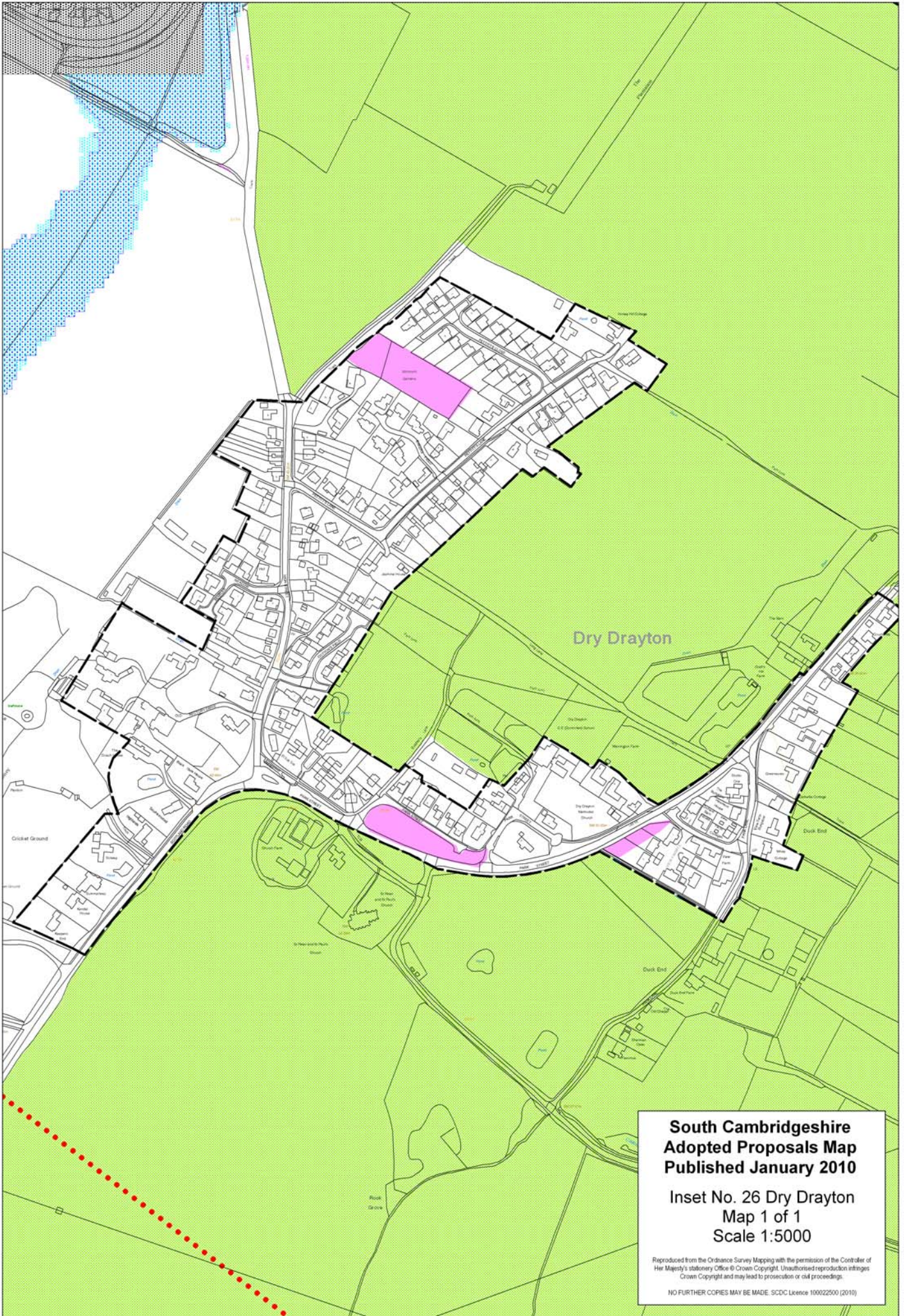


**South Cambridgeshire
Adopted Proposals Map
Published January 2010**

**Inset No. 25 Croydon
Map 1 of 1
Scale 1:5000**

Reproduced from the Ordnance Survey Mapping with the permission of the Controller of Her Majesty's Stationery Office © Crown Copyright. Unauthorised reproduction infringes Crown Copyright and may lead to prosecution or civil proceedings.

NO FURTHER COPIES MAY BE MADE. SCDC Licence 100022500 (2010)

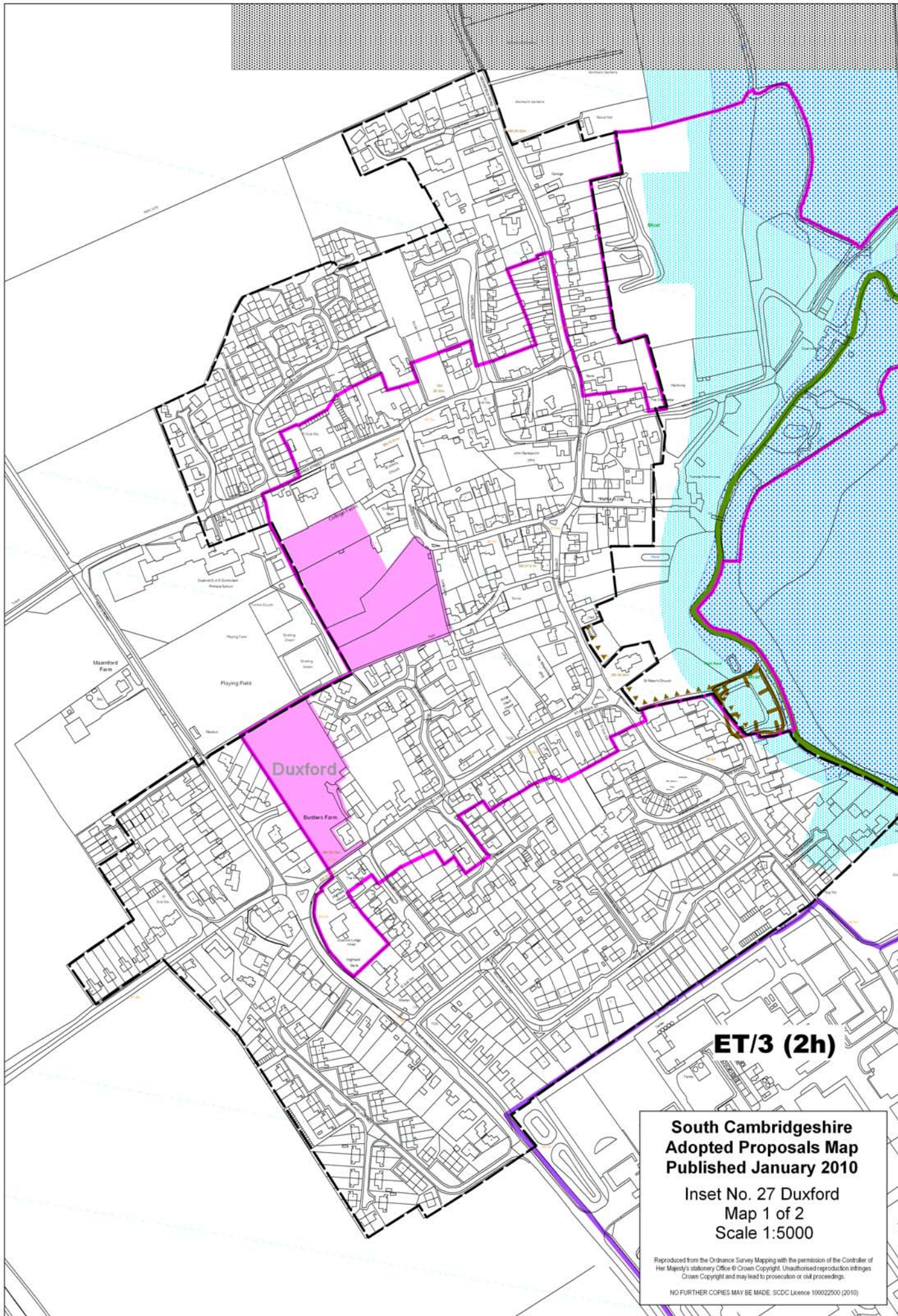


**South Cambridgeshire
Adopted Proposals Map
Published January 2010**

**Inset No. 26 Dry Drayton
Map 1 of 1
Scale 1:5000**

Reproduced from the Ordnance Survey Mapping with the permission of the Controller of Her Majesty's Stationery Office © Crown Copyright. Unauthorised reproduction infringes Crown Copyright and may lead to prosecution or civil proceedings.

NO FURTHER COPIES MAY BE MADE. SDC Licence 100022500 (2010)



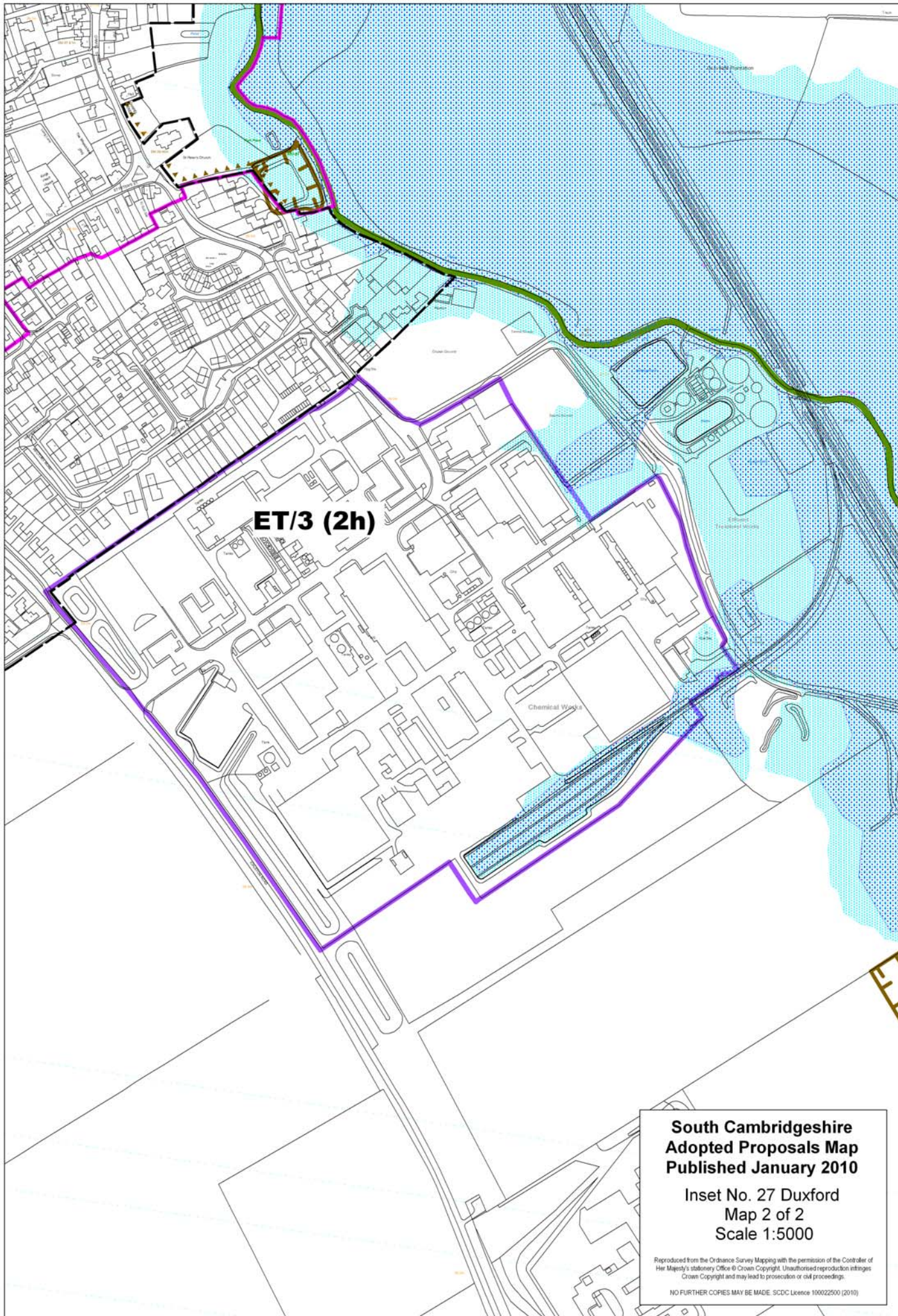
ET/3 (2h)

**South Cambridgeshire
Adopted Proposals Map
Published January 2010**

**Inset No. 27 Duxford
Map 1 of 2
Scale 1:5000**

Reproduced from the Ordnance Survey Mapping with the permission of the Controller of Her Majesty's Stationery Office © Crown Copyright. Unauthorised reproduction infringes Crown Copyright and may lead to prosecution or civil proceedings.

NO FURTHER COPIES MAY BE MADE. SDCS Licence 100022500 (2010)



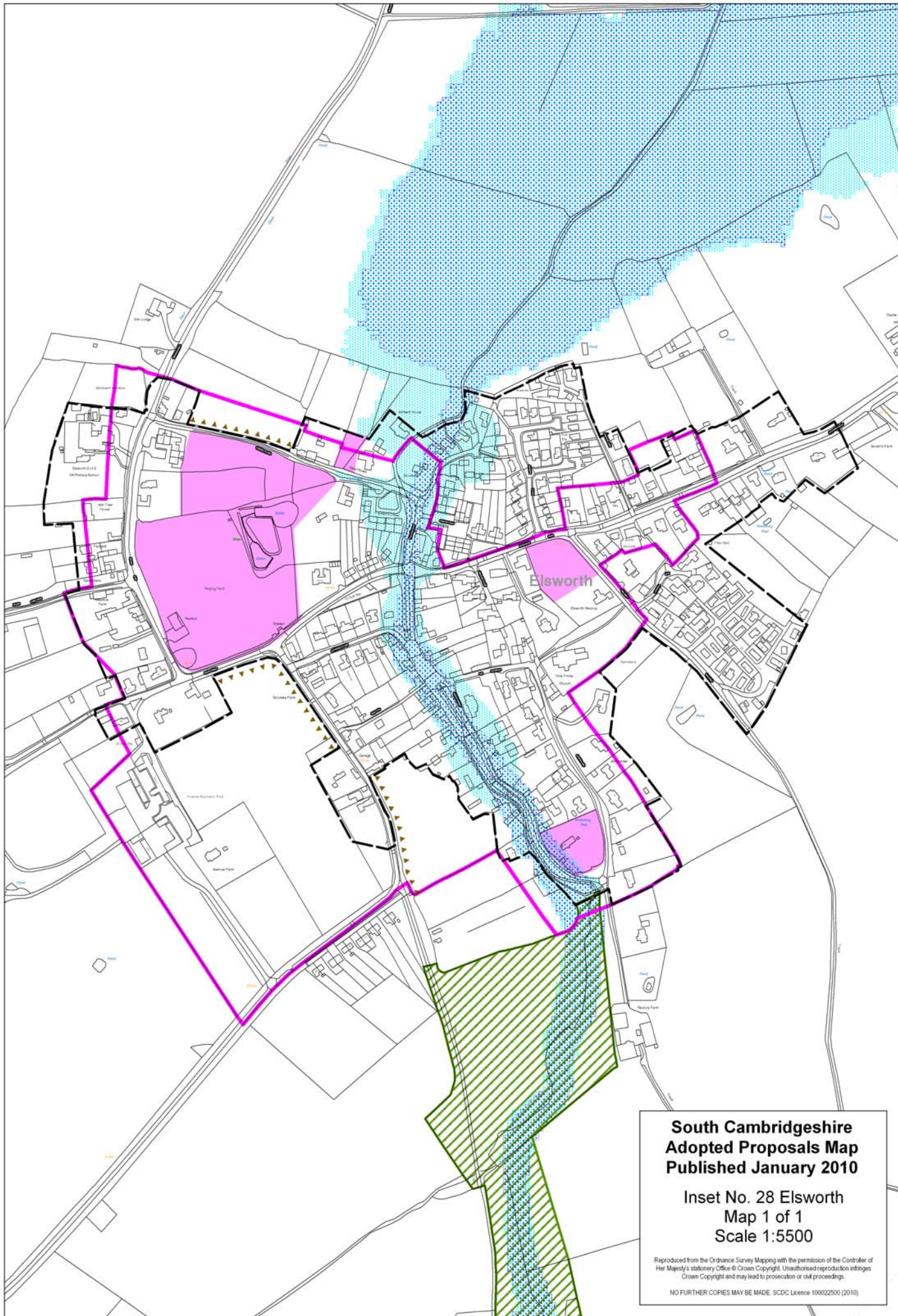
ET/3 (2h)

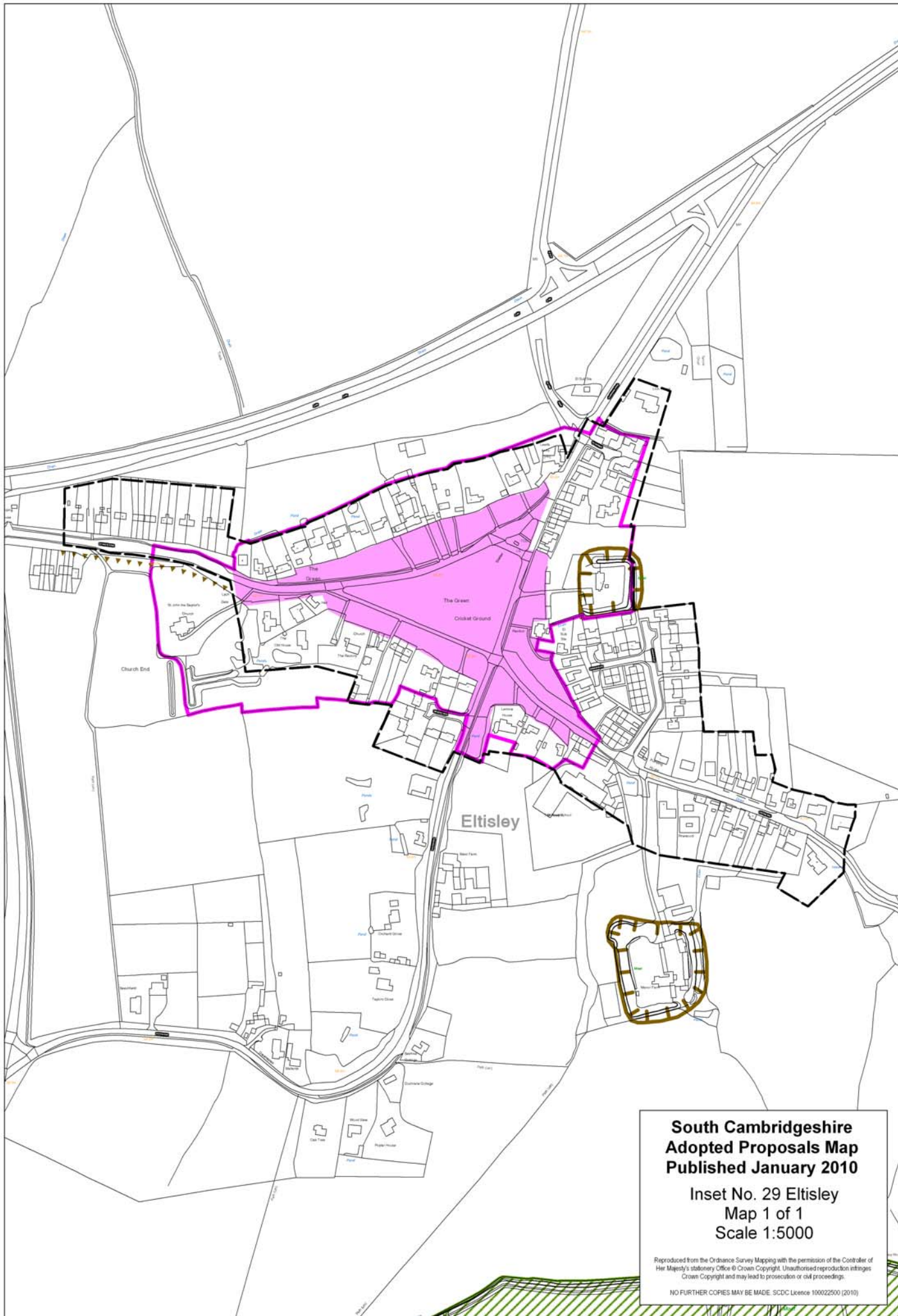
**South Cambridgeshire
Adopted Proposals Map
Published January 2010**

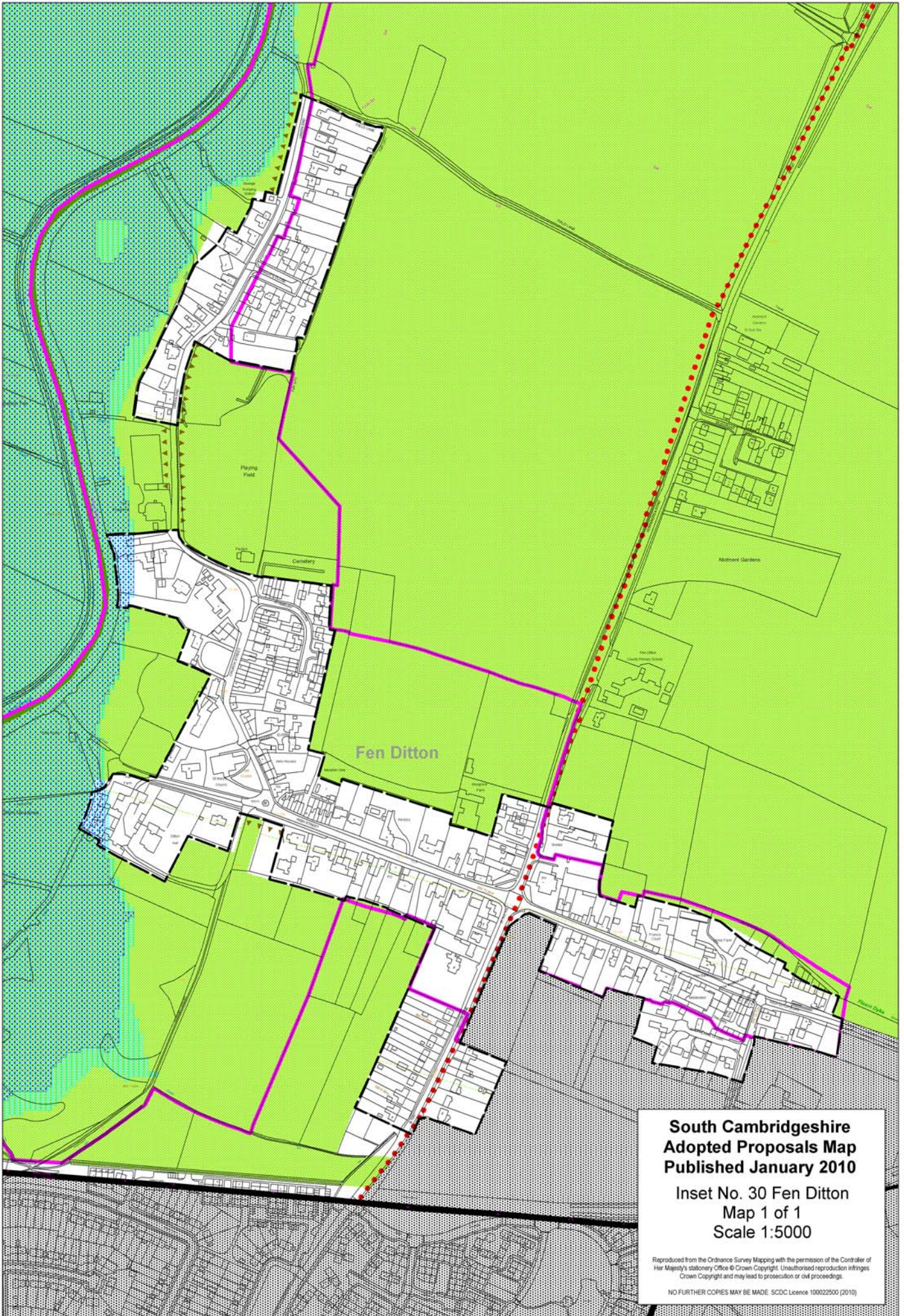
**Inset No. 27 Duxford
Map 2 of 2
Scale 1:5000**

Reproduced from the Ordnance Survey Mapping with the permission of the Controller of Her Majesty's Stationery Office © Crown Copyright. Unauthorised reproduction infringes Crown Copyright and may lead to prosecution or civil proceedings.

NO FURTHER COPIES MAY BE MADE. SDCDC Licence 100022500 (2010)





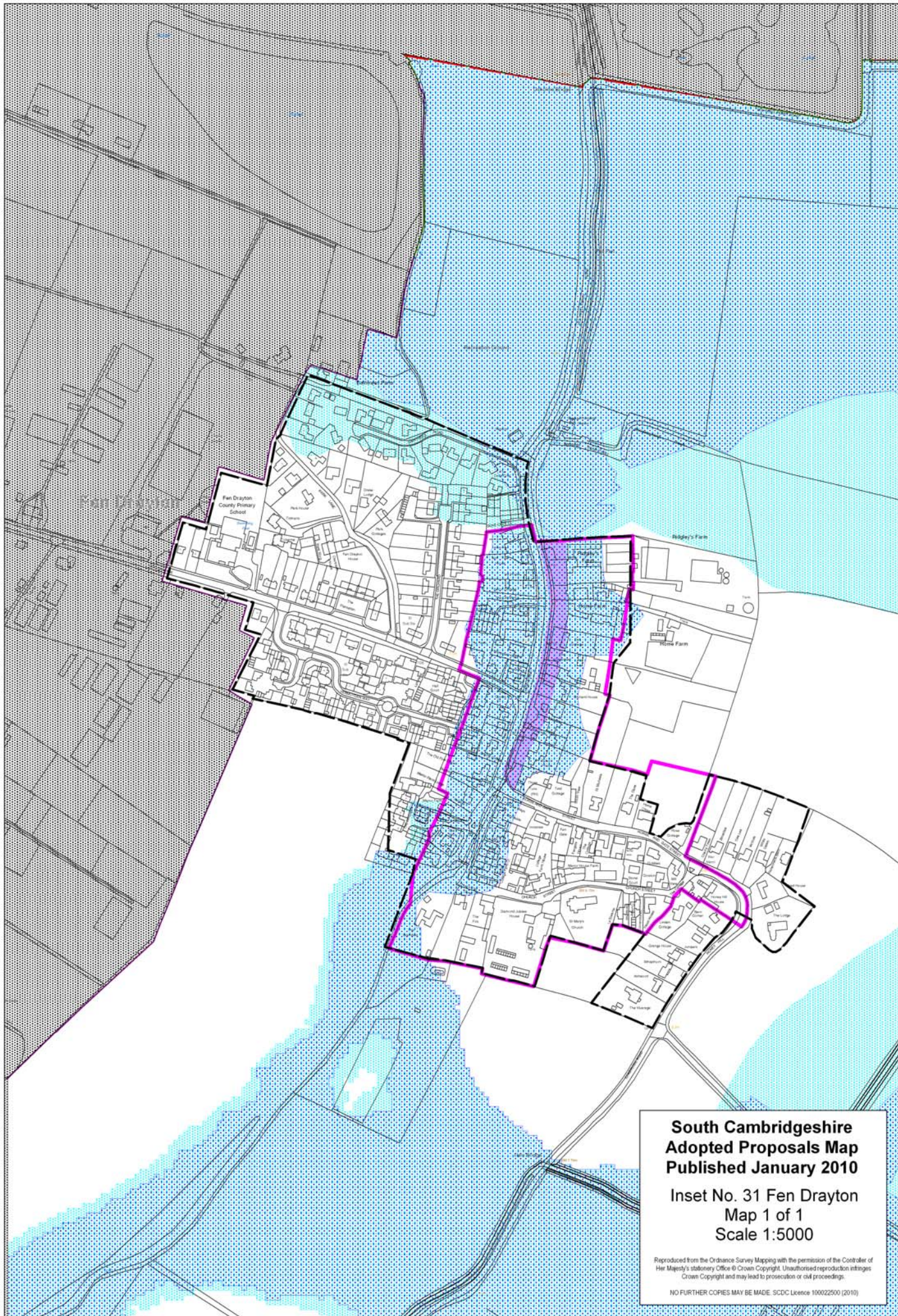


**South Cambridgeshire
Adopted Proposals Map
Published January 2010**

**Inset No. 30 Fen Ditton
Map 1 of 1
Scale 1:5000**

Reproduced from the Ordnance Survey Mapping with the permission of the Controller of Her Majesty's Stationery Office © Crown Copyright. Unauthorised reproduction infringes Crown Copyright and may lead to prosecution or civil proceedings.

NO FURTHER COPIES MAY BE MADE. SCDC Licence 100022500 (2010)

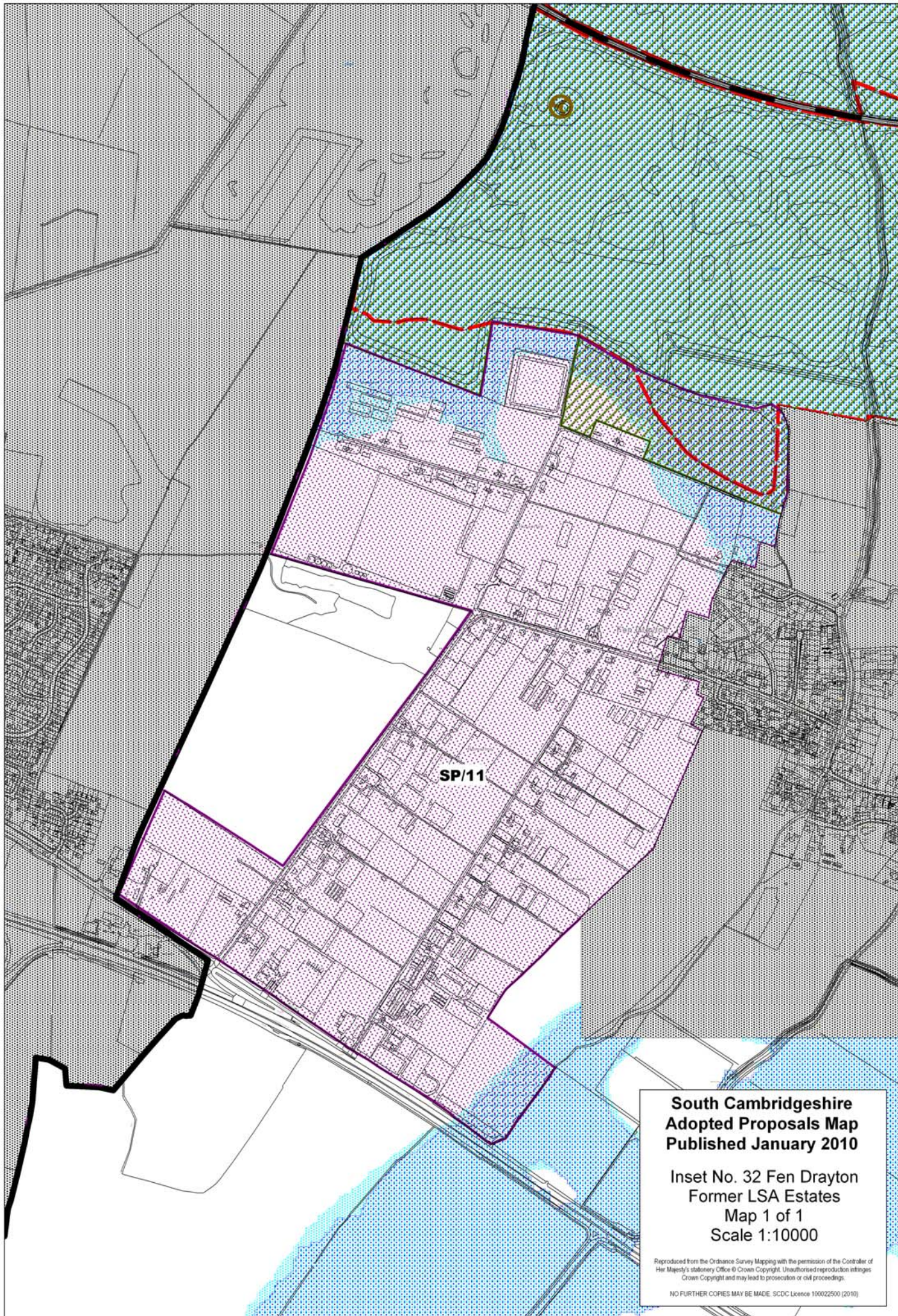


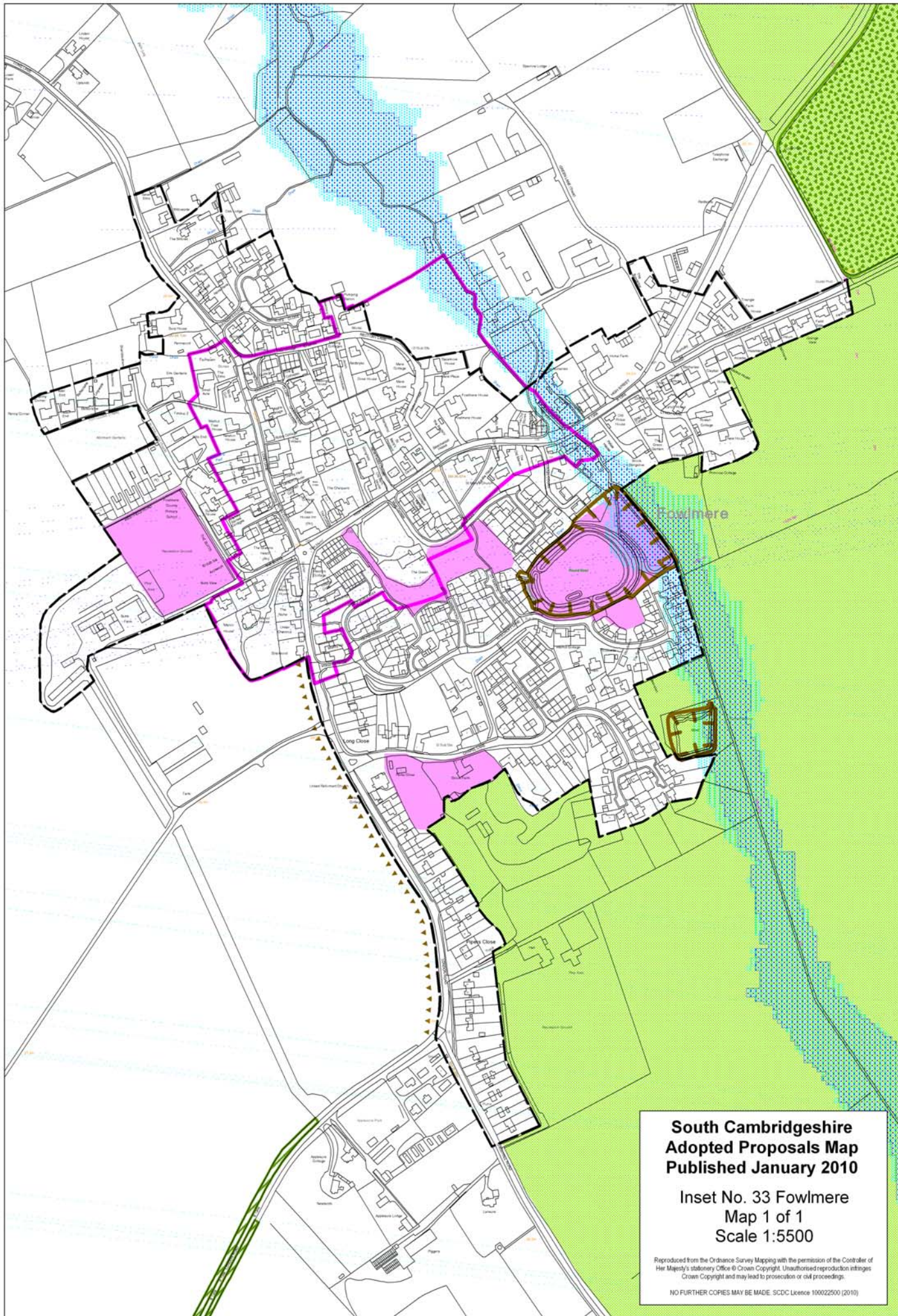
**South Cambridgeshire
Adopted Proposals Map
Published January 2010**

**Inset No. 31 Fen Drayton
Map 1 of 1
Scale 1:5000**

Reproduced from the Ordnance Survey Mapping with the permission of the Controller of Her Majesty's Stationery Office © Crown Copyright. Unauthorised reproduction infringes Crown Copyright and may lead to prosecution or civil proceedings.

NO FURTHER COPIES MAY BE MADE. SDCDC Licence 100022500 (2010)



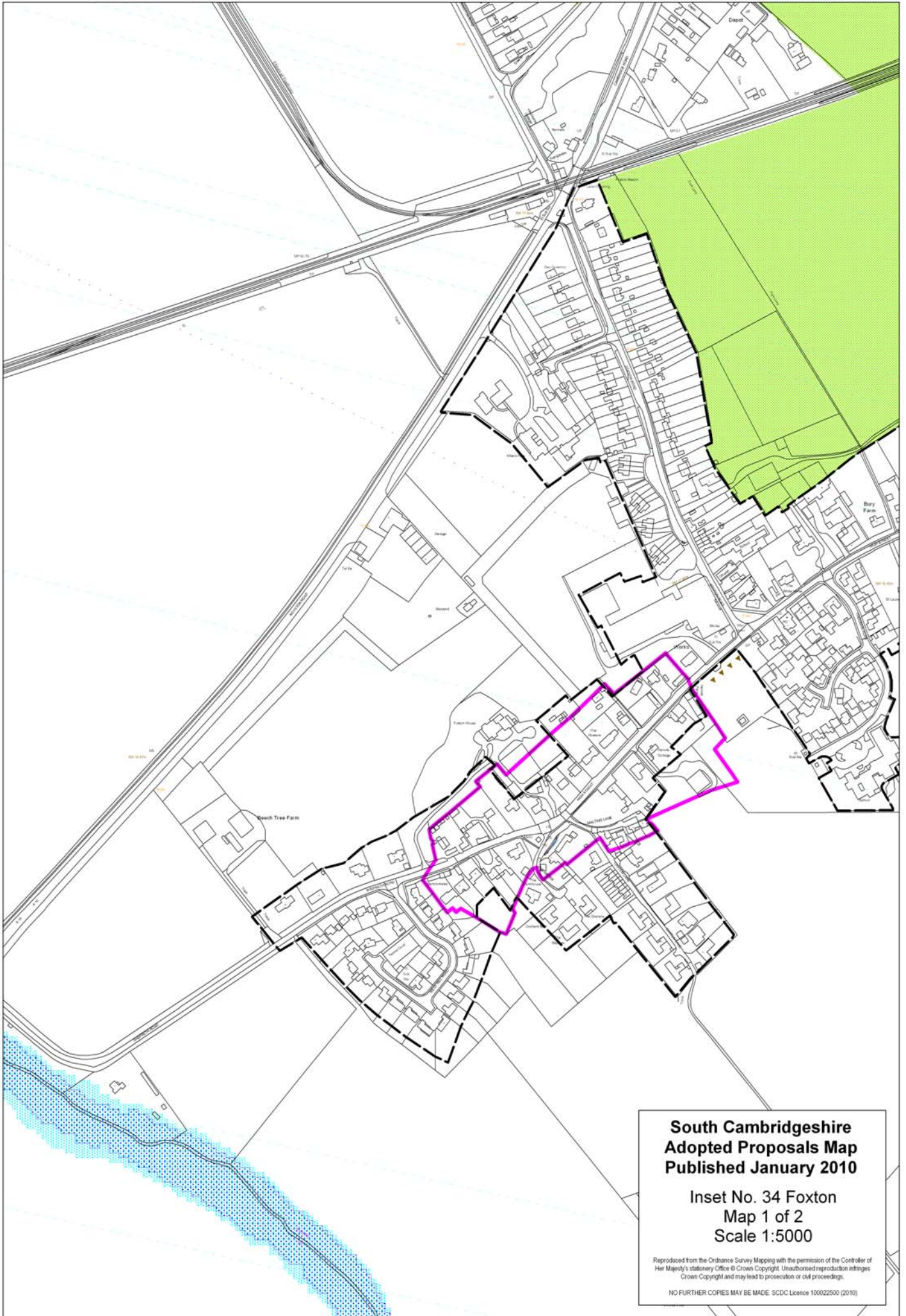


**South Cambridgeshire
Adopted Proposals Map
Published January 2010**

**Inset No. 33 Fowlmere
Map 1 of 1
Scale 1:5500**

Reproduced from the Ordnance Survey Mapping with the permission of the Controller of Her Majesty's Stationery Office © Crown Copyright. Unauthorised reproduction infringes Crown Copyright and may lead to prosecution or civil proceedings.

NO FURTHER COPIES MAY BE MADE. SDCDC Licence 100022500 (2010)



**South Cambridgeshire
Adopted Proposals Map
Published January 2010**

**Inset No. 34 Foxton
Map 1 of 2
Scale 1:5000**

Reproduced from the Ordnance Survey Mapping with the permission of the Controller of Her Majesty's Stationery Office © Crown Copyright. Unauthorised reproduction infringes Crown Copyright and may lead to prosecution or civil proceedings.

NO FURTHER COPIES MAY BE MADE. SDCDC Licence 100022500 (2010)

